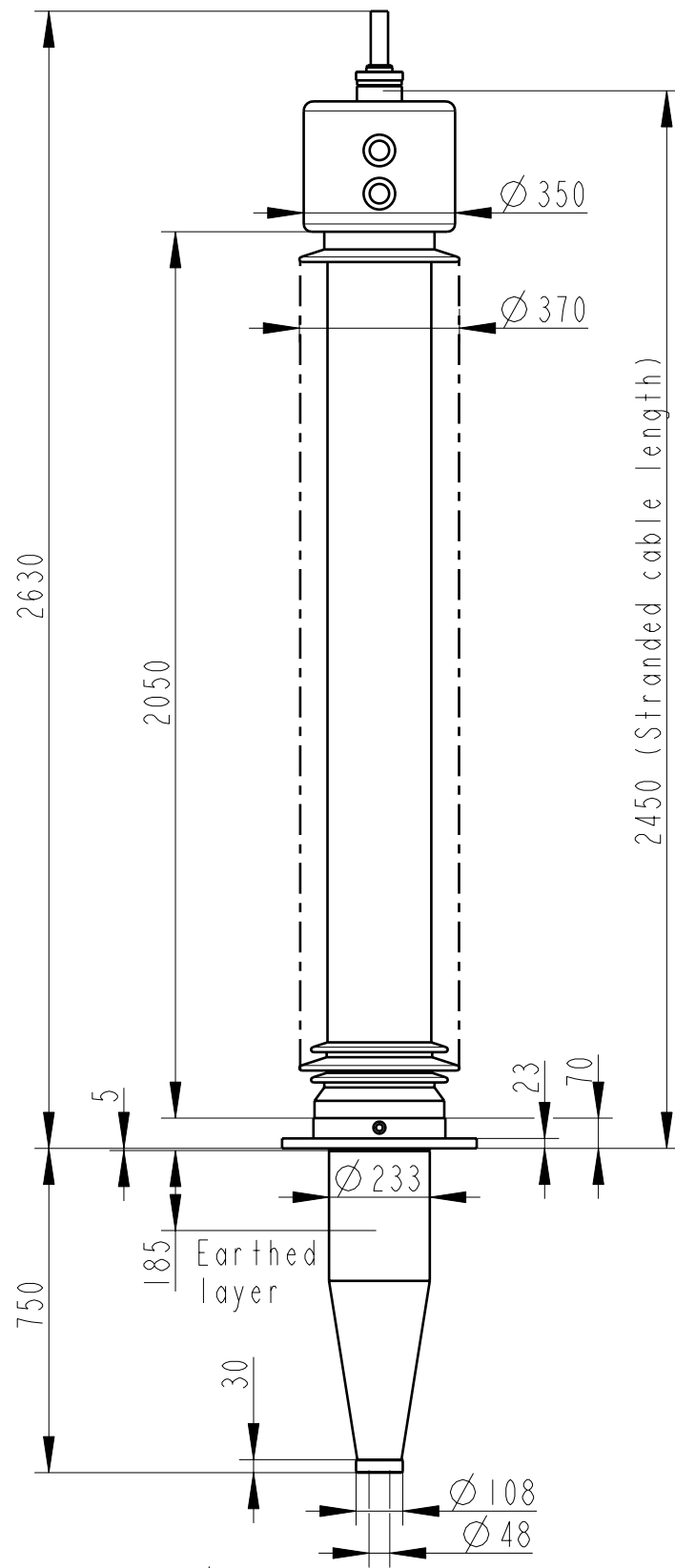
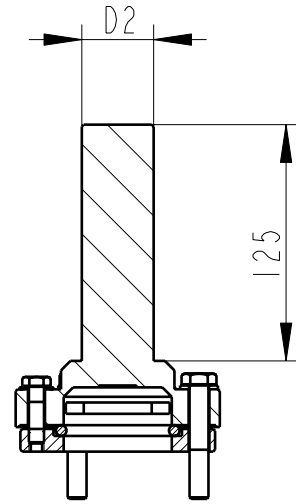


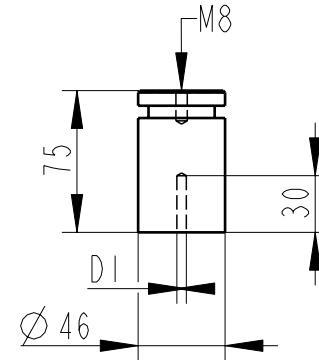
We reserve all rights in this document and in the information contained therein. Reproduction, use or disclosure to third parties without express authority is strictly forbidden. ©ABB



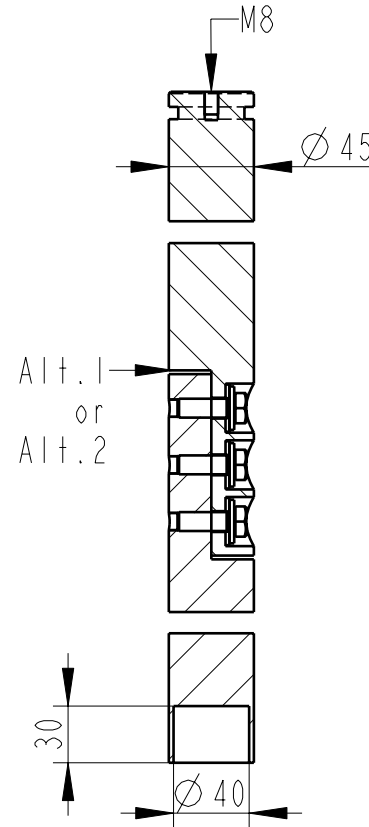
OUTER TERMINAL



INNER TERMINAL FOR STRANDED CABLE

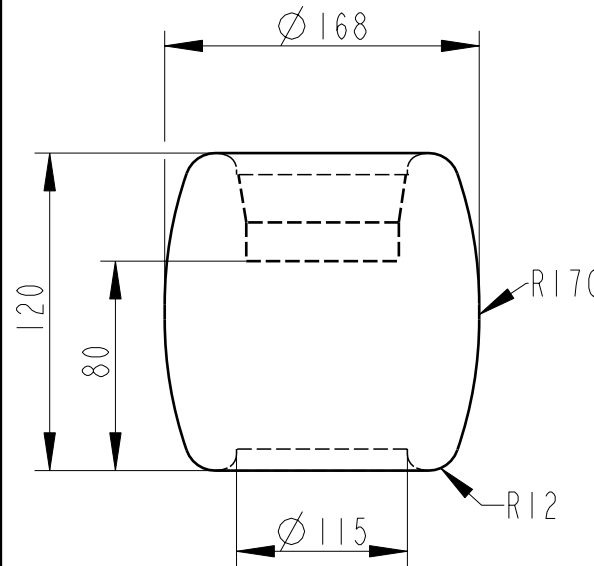


SOLID ROD CONNECTOR



The solid rod can be divided either:
 Alt.1: 20mm below the bushing flange or
 Alt.2: 20mm below the upper end of the bottom porcelain

END SHIELD



Bushing Data:

Rated Voltage	245	kV
Phase to Ground Voltage	200	kV
Dry Lightning Impulse 1,2/50 μ s	1050	kV
Wet Switching Impulse	725	kV
Wet power frequency AC	480	kV
Routine test Imin dry 50Hz	505	kV
Rated Current	1600	A
Creepage Distance	6550 \pm 170	mm
Mass	320	kg

Ordering Data:

BUSHING	COLOUR AIR INSULATOR	
LF 125 060-A	BROWN	
LF 125 060-G	LIGHT GREY	
OUTER TERMINAL	Material	D2
LF 170 017-BA	Al	$\varnothing 30$
LF 170 017-BC	Al	$\varnothing 60$
LF 170 017-BB	Cu	$\varnothing 30$
LF 170 017-BH	Cu	$\varnothing 40$
OTHER TYPES ON REQUEST		
INNER TERMINAL FOR STRANDED CABLE		
For brazing	Conductor area	D1
LF 170 018-AB	up to 95mm ²	$\varnothing 15$
LF 170 018-AC	up to 285 mm ²	$\varnothing 30$
LF 170 018-AD	up to 740 mm ²	$\varnothing 42$
LF 170 018-AA	Undrilled with pilot hole $\varnothing 5$	
SOLID ROD CONNECTOR		
LF 170 032-AA for Alt.1		
N/A for Alt.2		
END SHIELD	insulation	
LF 170 020-R	Epoxy	
LF 170 020-U	Pressboard (thickness 3mm)	

ABB Components Ludvika, Sweden	
No.	
Ur/Ur	kV Ir A 50/60 Hz
LI / SI / AC	kV
M	kg L mm V
C1	pF Tan δ s
C2	pF Tan δ s

Based on	Reg. No.	Title	GOM 1050-725-0
Prepared Lövnord	Responsible department COM/BK 0043		
Approved Johansson	Take over department		Language 82
Design engineering review Gutman	Database		Page 1(1)
ABB Components			Document No. 2751369-229